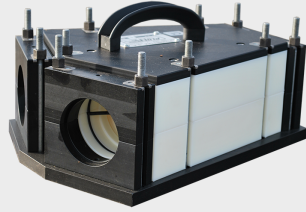




Figaro,
intermediate cable storage system, avoiding
figure of 8



Y-connector,
for the installation of cable into an occupied
duct



Sonic head,
for the installation of cables with low
stiffness

PLUMETT

PUSH THE BOUNDARIES

SIMPLE SOLUTION FOR
SOLID CONSTRUCTION



PLUMETT CABLE-JET™

THE WORKING HORSE OF JETTING. IT BLOWS, IT NEVER STOPS AND IT LASTS FOR YEARS.



www.plumettaz.com

Plumettaz S.A. | Route de la Gribannaz 7 | 1880 Bex - Switzerland

T +41 24 463 06 06 | info@plumettaz.com

MAIN ACCESSORIES

Standard equipment:

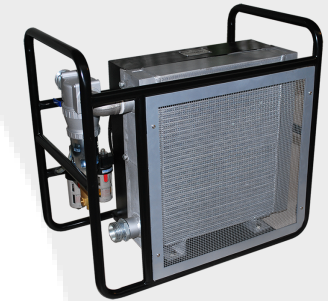
1 box for the CableJet / 1 box for tools, inserts, wear parts and consumables (seals, lubricant, etc.) / 1 set of tools / 1 speed and distance indicator / 1 air hose 1½" (10 m) and stop valve to connect to compressor / 2 bottles of lubricant Jetting Lube / 1 operation and maintenance manual

Standard version	Cablejet
Type	P01
Cable dia. [mm]	9-18
Duct OD [mm]	20-63
Drive unit	Pneumatic
Max. air consumption of motor [m3/min]	0.5 (at 4 bar)
Pushing force [N]	0-300
Linear pressure on cable [N/cm]	0-100
Max. speed [m/min]	100
Max. air pressure [bar]	12
Max. water pressure [bar]	25
Dimension of apparatus l x w x h [mm]	520 x 320 x 230
Dimension of apparatus with case l x w x h [mm]	600 x 400 x 340
Dimension of tools and accessories case l x w x h [mm]	600 x 400 x 250
Weight of machine [kg]	21
Total weight [kg]	47

Specifications are subject to change without notice



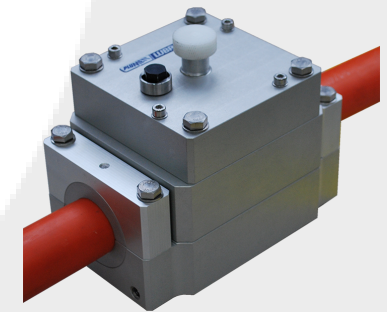
Hydrocab-080,
accessory for cable installation with
water (floating), 80 l/min



Air after-cooler,
to increase Jetting performances when
ambient temperature is over 20°C



Jetting Lube,
lubricant improving Jetting performance



Lubricator L18,
for the continuous lubrication of cables for a
better Jetting performance